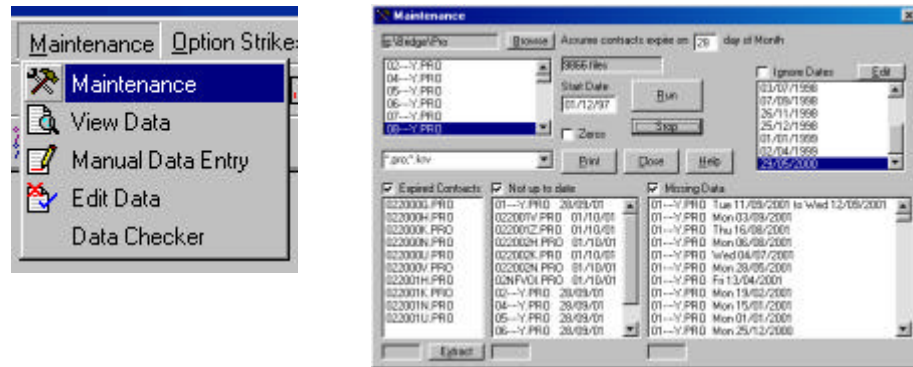


Maintenance



Select the location of the Data (to change the defaults, see Settings\Preferences\Data Paths)

Under the list of available files a selective search can be carried out for example typing BO*.PRO will only check the Soybean Oil price data.

The number of files to be analysed is displayed in the box

Check **Ignore Dates** to prevent them being displayed in the analysis, i.e. Bank holidays etc.

Click **Edit** to add or remove dates to be ignored.

Click **Execute** to run the routine.

Check **Expired Contracts**

A list of expired contracts will be displayed.

Click **Extract** to move the listed files to another folder (Default C:\Tess\Expired)

The program moves the files but does not delete them. It is left up to the user to delete the files if required.

The purpose of this routine is to maintain the files in the data folder as just the ones trading, thus freeing disk space and speeding up disk access times.

Check **Not up to date**

A list of files without current data will be displayed, together with the date of the last data in the file. Not up to date data may be because a current download has not been carried out, or the contract may have expired.

Check **Missing Data**

A list of files with missing data will be displayed, together with the dates of the missing data. Only the period from the **Start Date** will be checked.

Missing data may be due to:

Data for that day not being downloaded.

It may be a holiday.

There may be a data feed problem (see your data supplier).

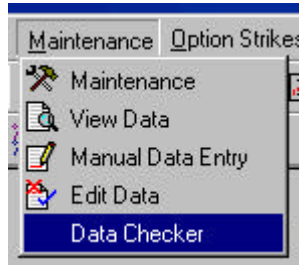
Other Checks

It is intended that other maintenance checks are added to ensure that your data can be kept as clean and error free as possible.

*Click **Print*** to print the lists.

Note:

It is assumed that all contracts expire on the 28th of the contract month.
This is not accurate but suitable for the purpose of removing most of the expired contracts.

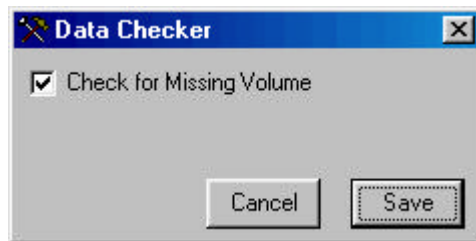


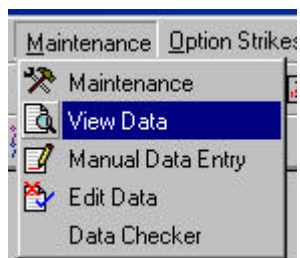
TESS performs various checks on the integrity of the price data when loading a new chart.

Missing Volume

If TESS detects there is missing volume in a chart a warning screen is displayed.

This facility can be turned on or off in the 'Data Checker' window.





Displays the data in the currently selected chart.

Select the Chart to view then click **Maintenance**, then click **View Data**.

A window will show the data in the currently selected chart.

Date, Implied Volatility, Real Volatility, Open, High, Low, Close, Volume and Open Interest.

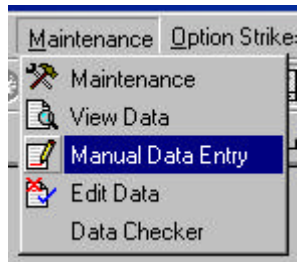
The window can be resized to show all the columns:

The screenshot shows a window titled 'Data View' with a yellow header bar. Below the header, the text 'BP, BRITISH POUND IMM Mar 2003 [Daily]' is displayed, along with a 'Close' button. The main area of the window contains a table with the following data:

Date	Implied	Real	Open	High	Low	Close	Vol	OI
29/01/03	8.35	7.3	1.6338	1.6444	1.6336	1.6416	0	0
28/01/03	8.2	7.18	1.63	1.6362	1.6254	1.6336	5647	37111
27/01/03	8.26	7.19	1.628	1.6354	1.6226	1.6308	5068	37197
24/01/03	7.86	7.21	1.616	1.63	1.6152	1.6284	7767	37234
23/01/03	7.23	6.81	1.615	1.6186	1.61	1.6158	6337	37169
22/01/03	7.57	7.35	1.6116	1.6148	1.603	1.6118	7720	36668
21/01/03	7.13	7.34	1.6052	1.6116	1.5956	1.6098	12149	37884

The data is displayed in reverse date order, with the latest date at the top.

Click **Close** to clear the View Data window.



Allows the manual input of data.

Click **Maintenance**, then click **Manual Data Entry**.

 A screenshot of the 'Manual Data Entry' dialog box. At the top, there is a 'File Name' field containing 'D:\Bridge\Temp\Bp2000m.Pro', a 'Select' button, and a 'Close' button. Below this is a 'Pro Format Data Only' label and a 'Clear' button. The main area contains input fields for 'Date' (23/05/00), 'Open' (1.4928), 'High' (1.4964), 'Low' (1.473), 'Close' (1.477), 'Volume' (4823), and 'OpenInt' (53580). There are 'Add' and 'Delete' buttons. Below the input fields is a table with columns: Date, Open, High, Low, Close, Vol, and OI. The table contains several rows of data. At the bottom, there are navigation buttons: '<', '>', 'P', and 'T'.

Date	Open	High	Low	Close	Vol	OI
23/05/00	1.4928	1.4964	1.473	1.477	4823	53580
22/05/00	1.4892	1.4974	1.4834	1.4928	2857	52919
19/05/00	1.483	1.4898	1.476	1.4856	3933	52941
17/05/00	1.4954	1.499	1.4888	1.4936	6231	53155
16/05/00	1.507	1.5074	1.495	1.4958	3674	49851
15/05/00	1.5182	1.5204	1.5054	1.5076	3593	49382
12/05/00	1.5048	1.521	1.503	1.5148	8998	49550
11/05/00	1.5126	1.514	1.494	1.5032	7332	51880
10/05/00	1.5336	1.534	1.508	1.5126	6476	51375
09/05/00	1.5322	1.5374	1.529	1.534	3289	51395
08/05/00	1.5322	1.5374	1.529	1.534	3289	51395

Click **Select**, then *navigate* to the folder where the file is to be saved or is currently saved. *Select* the file. If a new file name is input then a new data file is created.

Enter the date of the new data, then *input* the data values, then click **Add**.

If the date selected is already in the file the new values will overwrite the old values. There will however be a prompt to confirm the overwrite.

To delete a line of data, *click* the line of data to be deleted, then click **Delete**.

To edit a value in a current line of data, *click* the line of data, then *edit* the values as required in the edit boxes, then click **Add**.

Click '<' to move the date back to the previous trading day.

Click '>' to move the date forward to the next trading day.

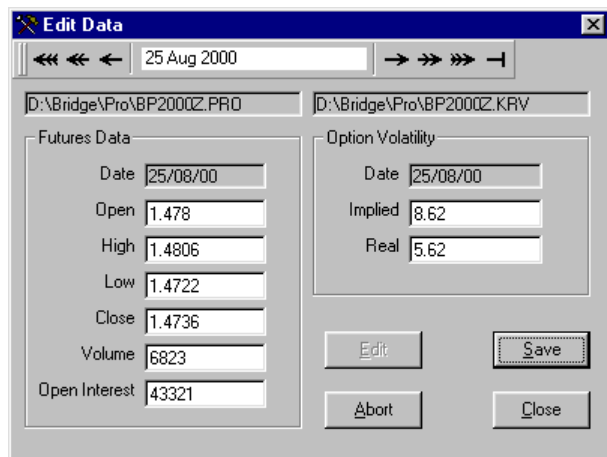
Click '**P**' to select the most recent previous trading day.

Click '**T**' to select Today's date.

Click **Close** to clear the Manual Data entry window.

This routine allows the alteration of data within an existing data file.

Select the chart to be altered. *Click Maintenance*, then *click Edit Data*.



Enter the date to be altered.

Click the Arrows to move the date by day, month or year.

If there is any data in the file for the date selected it will show in the boxes below.

The values will be 'greyed' out to prevent changes being made in error.

Click Edit to access the data.

Make any changes required then *click Save*.

Click Abort to cancel the edit mode without making changes. This relates to a current date and value changes. Any changes made and saved cannot be aborted

Click Close to exit the Edit Data routine.

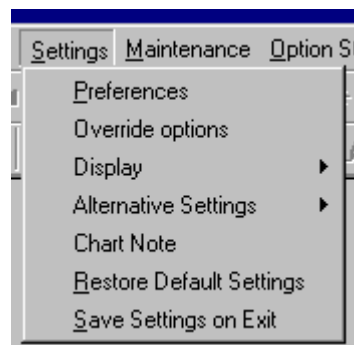
After the data has been changed the chart should be re-loaded to see the changes.

New lines of data cannot be added nor can complete lines of data be deleted using this routine.

The Manual Data Entry routine may be more suitable to that purpose.

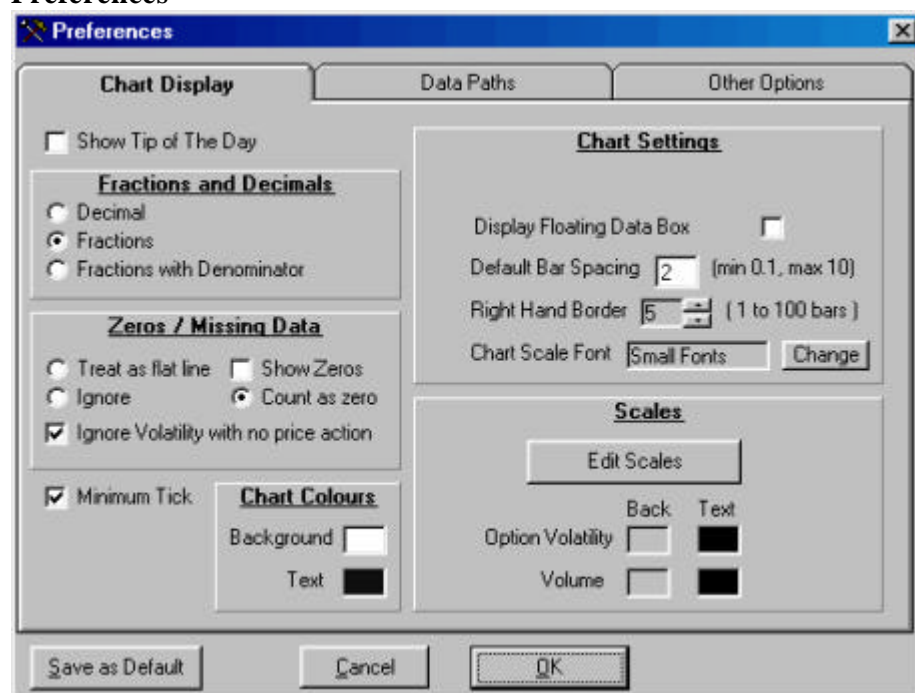
NOTE:

Changing data values will have an effect on the results of the indicators in the software.



The Settings in the software control some of the general characteristics of the display and chart action.

Preferences



The **Preferences** box allows the setting of default values of some of the display and folder path options in the software.

Make any changes required.

Click **Save as Default** to save the settings for next time the software is run.

If the values are not saved as default they will only take effect this time the software is run.

Click **OK** to accept the changes and return to the main software.

Click **Cancel** to close the Preference window ignoring any changes.

1. Tip of the Day

Check Show Tip of the Day to display the tip of the day each time the software is run.

2. Fractions & Decimals

123.468 Values displayed as decimals

123:15 Value displayed as fractions

123:15/32 Value displayed as Fractions with the denominator.

In some instances selecting Fractions with Denominator will result in a number which is too large for the display box allocated.

3. Zeros

TESS can be set to handle zeros in the Open, High, Low or Close in various ways.

A. Show Zeros

If a zero bar is encountered it will be shown in the format specified by the other options available. If this box is not checked the zero data will not be

B. Treat as flat line

If a zero is encountered the Open, High, Low and Close are assumed equal to the Close of the previous bar, therefore creating a flat line.

C. Ignore

The bar will be omitted, unless there is a corresponding value in an associated volatility chart, which will force a space to be drawn.

D. Count as zero

A Zero Bar will be treated as a zero. This may have adverse effects on calculations of averages and many other indicators within TESS.

E. Ignore Volatility with no price action.

If a value for volatility is encountered without a corresponding price bar the volatility bar is omitted. If the volatility bar is not omitted a zero price bar is created at the location as there would be a space. This may have an adverse effect on some of the indicators in TESS.

4. Minimum Tick

This formats any numbers on a chart to the traded formats of the individual contract. This facility is applicable primarily to Futures data where the broker may expect a certain number of figures of the value to be in a specified fraction format.

5 Chart Settings

A. Display Floating Data Box

Sets the Floating Data box to display or not to display by default.

B. Default Bar Spacing

Sets the default spacing of any new price chart.

C. Right Hand Border

Sets the number of bars at the right hand side of the chart from the last bar to the edge of the chart.

D. Chart Scale Font

Sets the type of font used for the scales on the chart. Not all fonts will support small sizes used in this software.

6. Scale and Chart Colours

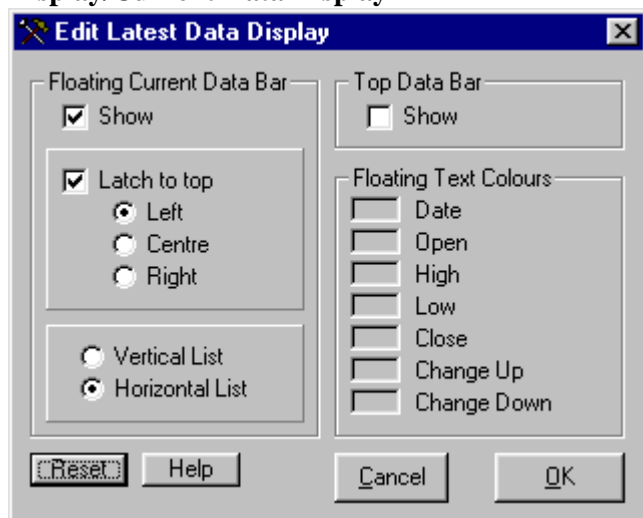
Click the colour boxes to change the colours of the background, the scales and the general bar colour

Override Options



The Override options provide a facility to override specific settings in a worksheet with the current default setting. More options are due to be added to this facility.

The example above overrides all TES bar settings, thus being able to change the colours on all charts without having to edit each on individually.

Display/Current Data Display

Edit Latest Data Display changes the display of the current days data.

Check **Show, Top Data Bar** to display the current data is a separate bar across the top of the chart.

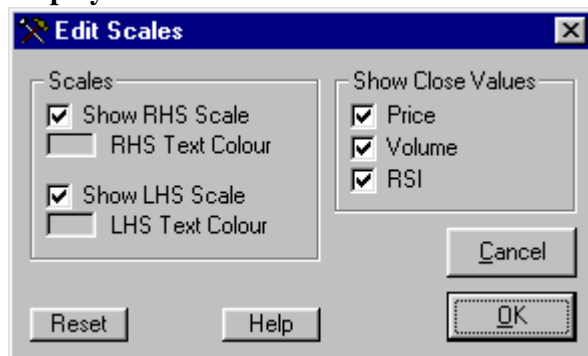
Check **Show, Floating Data Bar** to display the current data in a transparent window in various formats on the screen. The data can be displayed in a vertical or horizontal list and can be selected to latch to top of the chart or be set to float anywhere in the chart area.

Click on the **Colour** boxes to change the colours of the displayed text.

Click **Reset** to revert these settings to the default arrangement.

Click **OK** to save the settings and proceed.

Click **Cancel** to close the widow without making changes.

Display/Edit Scales

Edit Scales changes the display of the scales on the charts.

Click the **Colour** boxes to change the colour of any of the items.

Check **Show Close Values** to display the current value in the scale area.

Click **Reset** to revert these setting to the default arrangement.

Click **OK** to save the settings and proceed.

Click **Cancel** to close the window without making changes.

Alternative Settings

This allows two alternative sets of settings to be saved.

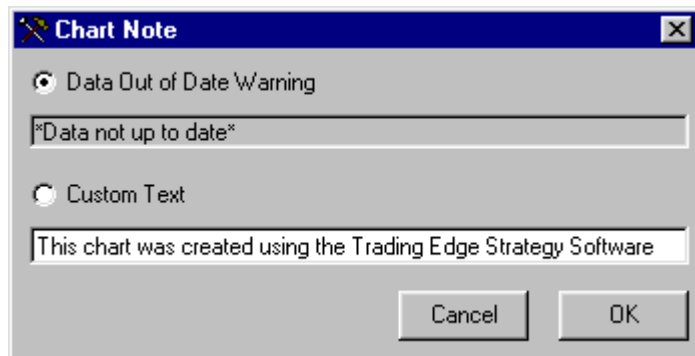
For example one may wish to have a white background for printing charts and a black background for viewing charts.

The procedure here would be to set up the software for your preferred printing options then click **Save Settings 1**.

Then set up the software with your preferred viewing options, then click **Save Settings 2**.

Either group of settings can be set quickly by selecting **Open Settings 1 or 2** at any time.

Chart Note



The Data Out of Date Warning places a warning at the base of any chart when the data does not appear to be current. The check facility allows for weekends but does not take account of bank holidays and details relating to the specific trading of any particular contracts.

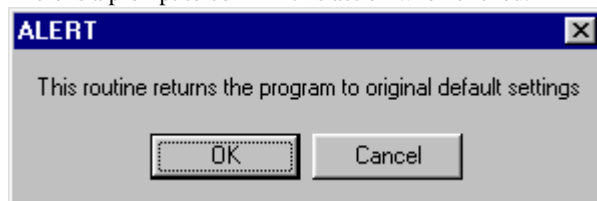
The Custom Text option places a standard piece of text at the base of all charts.

Only one of either of the above options can be selected.

Restore Default Settings

This routine will revert all the settings within TESS back to the original defaults of a fresh installation. It is preferable to restart the software to complete this action.

There is a prompt to confirm this action when clicked.



Save Settings on Exit

When TESS closes down it saves the window states and positions for the next time the program is used.

Uncheck Save Settings on Exit to prevent this if required.