

Getting Started

Installation by CD

Insert the CD.

The CD should 'Autorun' when placed in the CD Drive.

The TESS Logo should then appear

Select "Install TESS v2"
to install the software.



If the 'Autorun' does not execute, then:
Click the **Start** button on the task bar, then
select **Run**.

Type **D:\SetupTESS.EXE**
(where D: is your CD drive's letter).
If the file is not found click Browse to
navigate to the file.
Then click on **OK**.

Follow the instructions on the screen.

When the installation is complete, run TESS to complete the Licensing arrangements.

Installation by Single File

If the installation is from a file not on disk, e.g. downloaded from the internet,
locate the installation file.

Run the **Installation File** to start the process.

A typical installation file will be called TESS-v2018.exe

Then follow the on-screen instructions.

When the installation is complete, run TESS to complete the Licensing arrangements.

Preferences

It is recommended to select all the defaults when installing TESS.

Installation settings can be changed if required, however it makes technical support for the software easier if the defaults are used.

Select '**C:\Tess**' as the installation path

This is the recommended location for the software.

An alternative location can be selected if required.

Select '**Backup replaced files**'

This is recommended because if any files on your computer are replaced during the installation they will be copied to this folder first for safe keeping.



Double Click the **TESS v20** icon on the desktop to start the software.

OR

The software can also be started by from the Windows 'Start' menu :



Click **Start** on your computer (lower left hand side of the desk top)
Click **Programs** from the menu



There should be a **TESS** program group.

Click the **TESSv20** icon to start the program.
(Remove Tess will uninstall the application from your computer)
(Tess Help will load the Help File)

TESS will prompt for registration.

Follow the details on the screen to register the software.

All version of TESS, from Demo to Full Purchase, need to be registered.

When registering TESS follow the instructions shown on the registration screen, which appears when TESS is run for the first time.



Following Registration the appropriate License File will be e-mailed to you to enable TESS to operate.

Important Note:

TESS is registered to one specific computer. If alterations are made to the computer hardware, TESS may not recognise it as the same machine. If this is the case please contact Beechwood Publications for a replacement License File.

To Access the License Files from e-mail:

If you have been sent a License File by e-mail,

either: double click the attachment to execute the file from the e-mail message.

or: save the attachment to disk and then execute it.

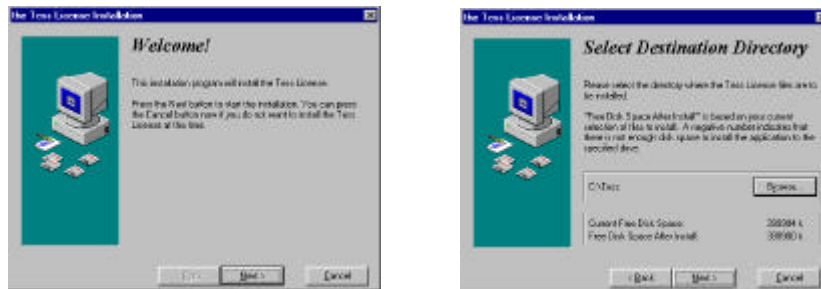
When the License File installation program appears follow the instructions shown below.

(If you have difficulties accessing the attachment from your e-mail system, please contact your e-mail provider for assistance).

(Some e-mail providers prevent 'executable attachments' being received. If this is the case you may be sent a 'zipped' copy of the executable file.)

Executing the License File Installation Program:

When executing the self-extracting License File the following procedure should be used:



Click 'Next'

Check the path is where TESS was installed (default C:\Tess), then *click* 'Next'

If the procedure has been successful then the software will not prompt for registration when run. Registration screen will not show when TESS is run and there will be an indication on the header screen that the software has been registered.

Purchased in Full

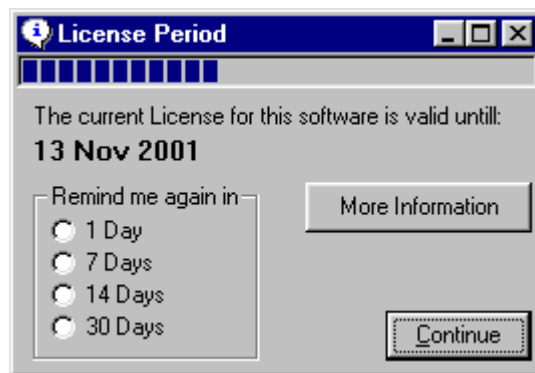
If the software has been purchased in full then it can be registered for continuous use. Updated License files may be required for some software updates and upgrades.

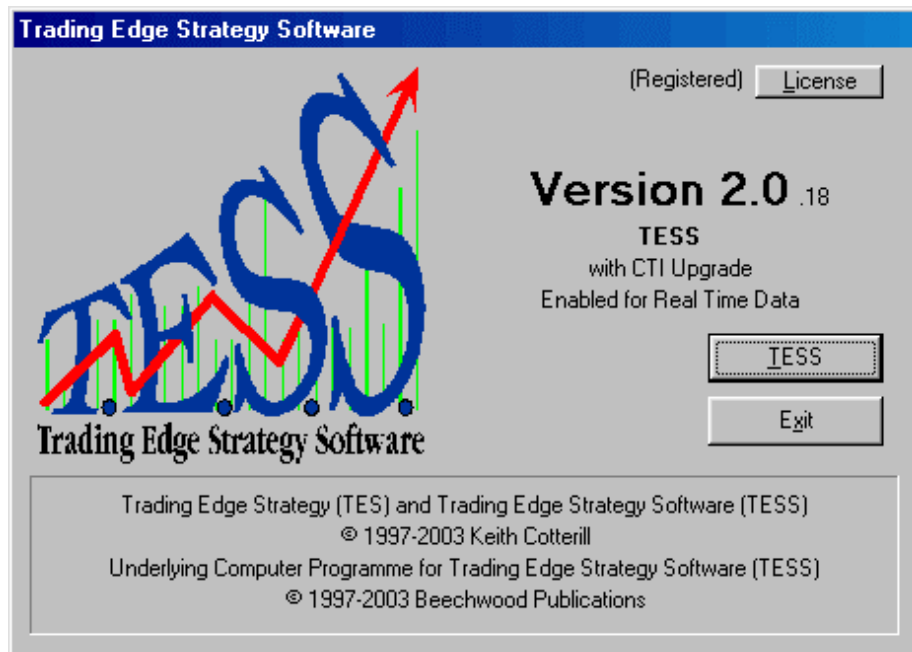
Purchased by Instalments or Rented

If the Software is being purchased by instalments or being rented then monthly License Files will be sent to your e-mail address on about the 5th of each month. This will allow the use of the TESS to continue into the following month. If you do not receive any communication by the 7th please contact us. The usual expiry date for monthly license files is the 13th of each month.

License Reminder

If there is an expiry date for the software this reminder lets you know how many days are left before the program lapses.



Header Screen

Click **TESS** to launch the program.

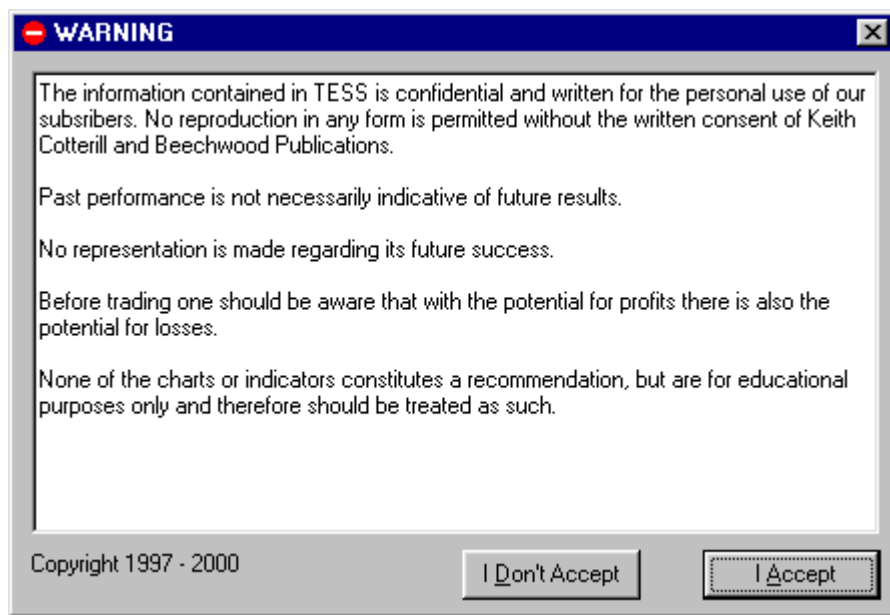
Click **License** to obtain registration information.

Click **Exit** to end the program.

The program has been set up with default folders and files to suit the standard operation of the various data services.

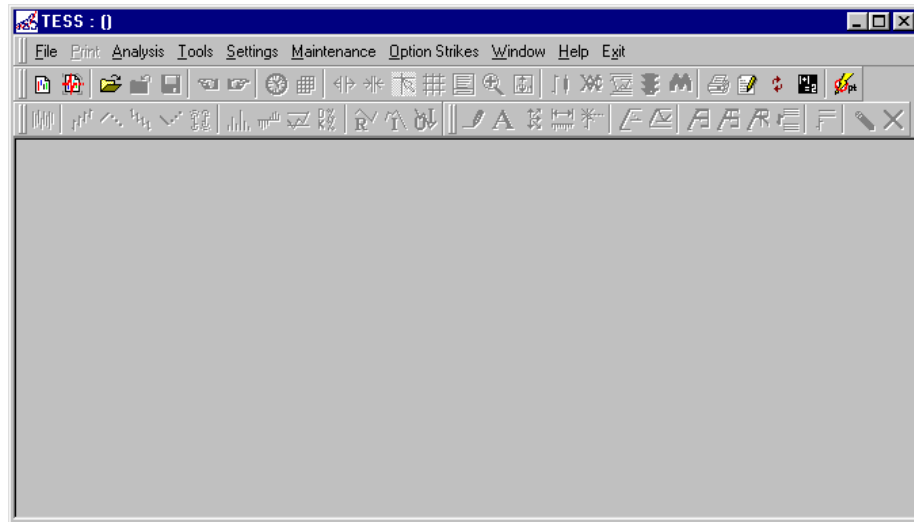
If you have used different folders for your data then these should be noted in the 'Settings' section of the main TESS program to direct the application to your specific folders.

Each time TESS is run the following warning screen will show.



This screen cannot be switched off.

This screen shows every time to ensure that the content of the screen is noted and agreed by any user every time the software is used.

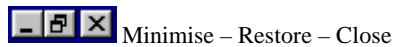
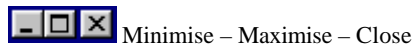


The TESS main window will be displayed as above.

(Most of the icons will be 'greyed' out until a chart has been loaded.)

To alter the size of the screen use the clip controls at the top right corner or use the mouse to resize the main window by *dragging* the edges or corners.

The most common display size used is to have the window maximised. *Click* the middle windows clip control to maximise the window.



TESS requires a minimum screen resolution of 600 x 800.
The software performs a check for this setting when first starting.

If the Main Window is too small some of the tools may not be immediately visible. This can be rectified by changing the screen resolution in the 'Windows'/'Control Panel' or by enlarging the TESS main window.

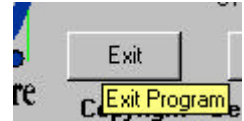
Most of the tools in TESS do not become operational until a chart has been opened. The tools which are operational are not directly related to specific chart information.

To Exit the software:

Click **Exit** on the main menu, to end the program



From some locations this will return to the Program Header screen.



Just click **Exit** again.