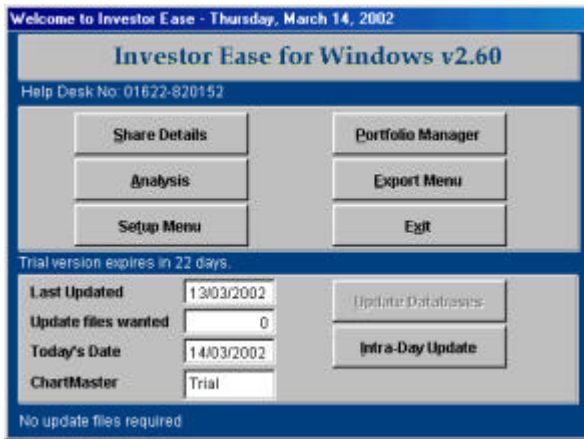


Using UK Stock Data from 'Investor Ease' with TESS

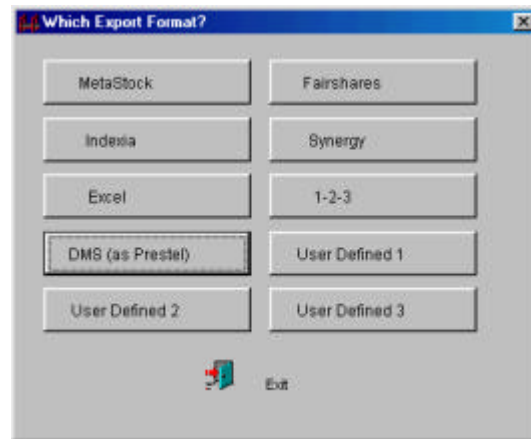
These instructions assume the Investor Ease software has been installed and the data is up to date. Please contact Investor Ease for any instructions on getting their data feed up and running.

To export a set of Stock Data files for use with TESS.

Step 1. In the Investor Ease front header screen Click 'Export Menu'



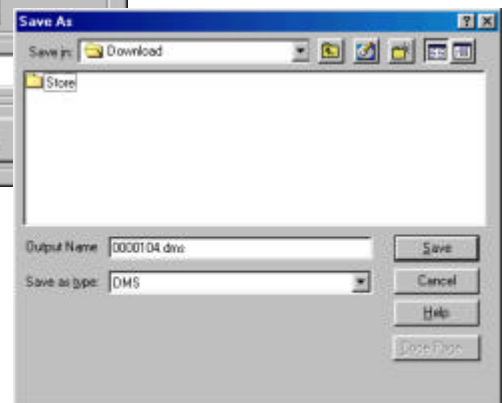
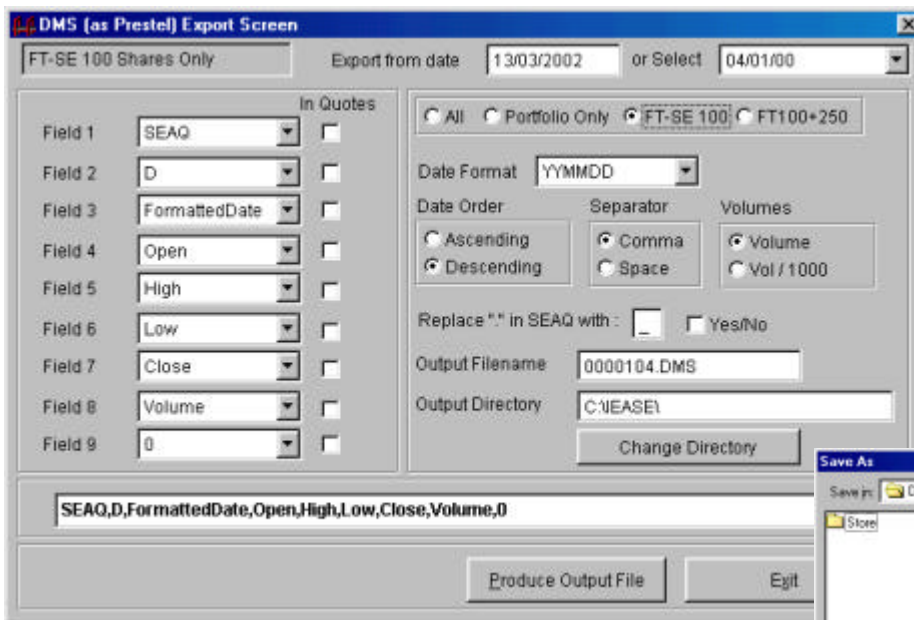
Step 2. Select 'DMS (as Prestel)'



Step 3. Select which **Data files** to export. (The example below shows just the **FT-SE 100** selected.)

Step 4. Select the **Date** from which you want the data to start. (The example shows all data from the **beginning of 2000**)

Step 5. Click 'Change Directory' and navigate to the 'c:\Tess\Prestel\Download' folder.

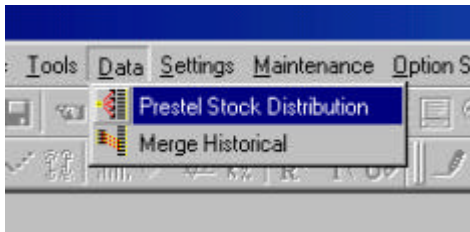


Step 6. Click 'Produce Output File'.

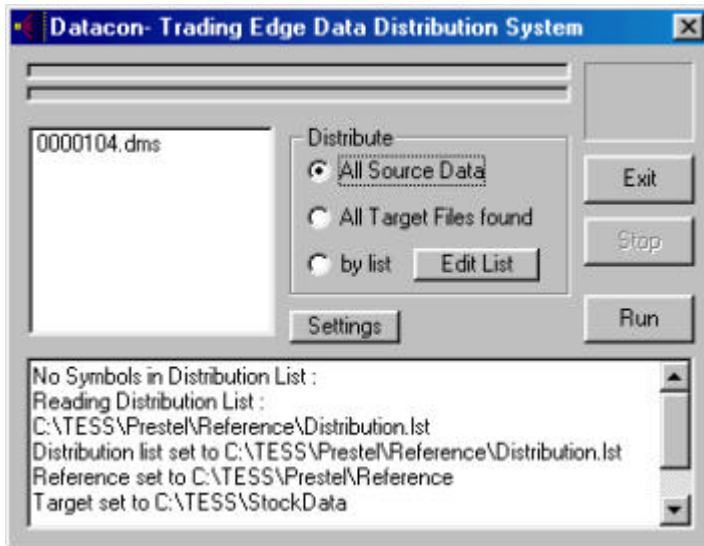
Step 7. Click 'Save'.

Step 8. Close Investor Ease Software.

Step 9. Start TESS



Step 10. Click **Data**, on the main screen, then Click **Data Distribution**.



Step 11. Click **Run**.

All the files will be distributed into the selected target folder (default = C:\TESS\Stock Data)

To update a days new data for use with TESS.

Follow the instructions above but just select to export one days data, or however many days are needed to update the files.

Notes:

The main data base is maintained and stored with InvestorEase.

The data base with TESS can be deleted and recreated at any time providing the Investor Ease data is kept up to date.

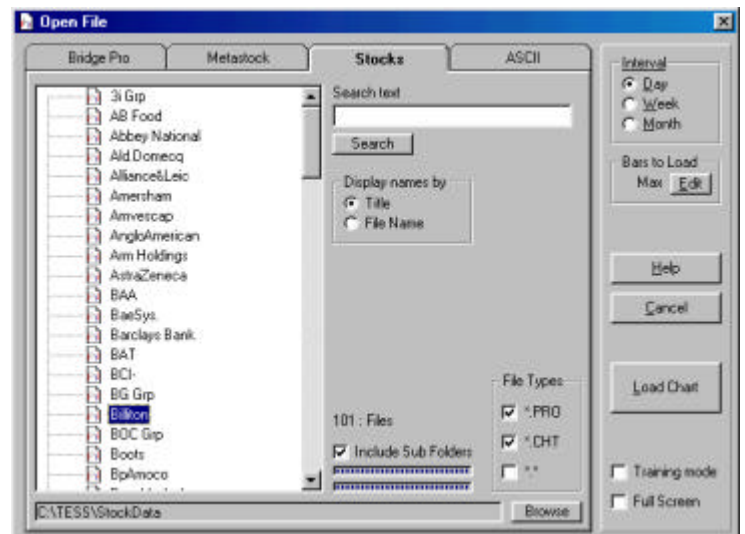
For example you may be exporting the FTSE-100 then decide you wish to view the FTSE-350.

The quickest method is to delete the data files in the c:\TESS\Stock Data folder and create a new data base by exporting and distributing the full FTSE-350.

To load a Stock Chart in TESS

Click **File**, Click **New Chart**, Click the tab **Stocks**
Select the **Stock File** you wish to view and click **Load Chart**

The path should be set to the same folder where the data is distributed to. (the default location is C:\Tess\StockData).
Click **Browse** to change the path if required.



For TESS support

Tel : 01275 372537

e-mail jc2004@tessonline.net

For subscription details for Investor Ease

Tel : 01622 820152

e-mail : enquiries@investorease.com